



A PROFILE



ASCENT CONSTRUCTIONS PVT. LTD.

Construction
with
Perfection

ABOUT US

Ascent Construction Private Limited

Ascent Construction Private Limited is a reliable, respectable and ever rising organization, invested into construction industry 18 years ago with a sole aim – to change the skyline of India with remarkable engineering innovations and designs. To fulfill vision, we've been striving hard and focusing only on its key principles – Quality, Technology and Methodology to offer many landmark business towers such as commercial, industrial, institutional, residential, hospitals, multistoried group housing.

The organization enjoys full support of its staff - engineering and management professionals to excel in the market. Besides we're also strengthened by experienced plumbers, electricians and fire-fighting, aluminum and interior associates of repute. Then, there are few specialist consultants in the panel to solve multi-disciplinary problems.

Ascent has evolved as a construction firm over the years. Our expertise and the professional manner that we deliver each project we undertake have helped us carve a niche for ourselves and to win prestigious clients. Our thirst to deliver quality with style, though forced us to introduce latest technologies and equipments it also brought dividend in the form of awards in construction field.

With its own financial standing in the form sufficient capital investment/reserves, a list of supportive bankers and a proper network of Vendors & Associates, Ascent Construction Private Limited is set to touch newer skies under the leadership of Mr. Suresh Gogia – founder and Managing Director of the company very soon.

ASCENT FAMILY





SURESH GOGIA
MANAGING DIRECTOR

FEW WORDS FROM MANAGING DIRECTOR

“Those who want to excel, the sky is the limit for them” is the statement that inspired me to dream big and venture into construction industry with the formation of “ASCENT CONSTRUCTIONS PVT. LTD.” Today, when I look back and analyze my journey till date, I take immense pride in my decision, which was fully supported by the entire team of Ascent.

Over the years, we as a construction firm have evolved by introducing latest technologies and hiring services of top-notch engineers and managers. Our professionalism and expertise has helped our clientage to develop various award-winning projects. From multi-storey buildings to IT Parks, Villas to Independent Floors, Hospitals to Schools we've delivered flawless constructions space with international standards.

In just 18 years of inception ASCENT CONSTRUCTIONS PVT. LTD. has carved a niche for itself and is on the pathway of becoming one of the trustworthy, innovative construction companies in the horizon of real estate.

No doubt, if real estate industry continues to flourish and explore newer skylines we see even a brighter future and to scaling new height.



Residential Project For
RG Groups “Luxury Homes”
▶ Area : 19 Lakh Sq.ft. (Approx)
at
Greater Noida



Residential Project For
Anthem Group
“French Apartments”
Area : 20 Lakh Sq.ft. (Approx)
at
Noida Extension



Residential Project For
Supertech “Apex Towers”
▶ Area : 11 Lakh Sq.ft. (Approx)
at
Noida

Residential Project For
VVIP Group
"VVIP Addresses"
Area : 8 Lakh Sq.ft. (Approx)
at
Raj Nagar Extn,
Ghaziabad



Residential Project For
Jaypee Group "Aman Towers"
Area : 16 Lakh Sq.ft. (Approx)
at
Noida

Residential Project For
Nimbus Group "The Hyde Park"
Area : 6 Lakh Sq.ft. (Approx)
at
Noida





Residential Project For
VVIP Group "VVIP Homes"
▶ Area : 10 Lakh Sq.ft. (Approx)
at
Greater Noida



Residential Project For
Landmark Group "Kunjeans Heights"
▶ Area : 6 Lakh Sq.ft. (Approx)
at
Faridabad



Residential Project For
Jaipuria's Group "Jaipuria Sunrise Greens"
▶ Area : 10 Lakh Sq.ft. (Approx)
at
Ghaziabad

Residential Project For
Oasis Group
"Oasis Emerald Heights"
Area : 5 Lakh Sq.ft. (Approx)
at
Ghaziabad



Residential Project For
Vertical Limits "Beetel Lap"
Area : 9 Lakh Sq.ft. (Approx)
at
Sports City, F1 Track
Gr. Noida

Residential Project For
Pan Group
"Pan Oasis"
Area : 6 Lakh Sq.ft. (Approx)
at
Noida





Residential Project For
Landcraft Group
"River Heights"
Area : 3 Lakh Sq.ft. (Approx)
at
Raj Nagar Extn,
Ghaziabad



Residential Project For
Omaxe Group
"NRI City"
Area : 7 Lakh Sq.ft. (Approx)
at
Greater Noida



Residential Project For
Eldeco Group
"Eldeco Mensionz"
Area : 2.50 Lakh Sq.ft. (Approx)
at
Gurgaon



Residential cum
Commercial Project For
Shipra Group "Shipra Krishna"
Area : 9 Lakh Sq.ft. (Approx)
at
Indirapuram, Ghaziabad



Residential Project For
Supertech "Sports City"
Area : 8.80 Lakh Sq.ft. (Approx)
at
Meerut



Residential Project For
M2K Group
"County Heights"
Area : 8 Lakh Sq.ft. (Approx)
at
Daruhara, Sec-5, Gurgaon

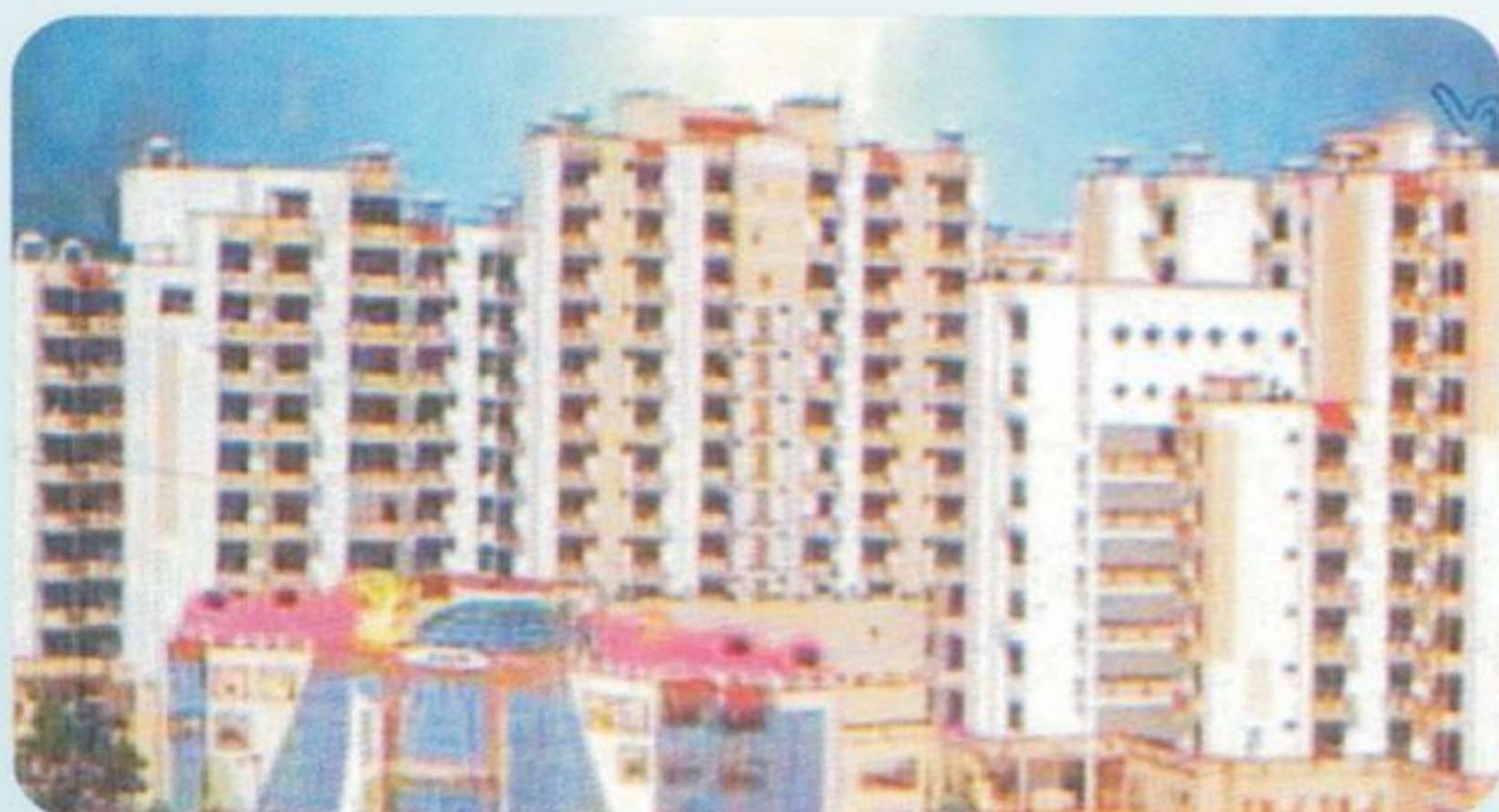


Residential cum Commercial
Project For
Shipra Group
"Shipra Riviera"
Area : 2 Lakh Sq.ft. (Approx)
at
Ghaziabad



Residential Project For
Triveni Group
"Triveni Galaxy "
Area : 8.70 Lakh Sq.ft. (Approx)
at
Faridabad

Residential Project For
Shipra Group "Sun Tower"
Area : 6 Lakh Sq.ft. (Approx) ◀
at
Indirapuram



Residential Project For
Supertech
"Rameshwar Orchids"
Area : 6 Lakh Sq.ft. (Approx) ▶
at
Ghaziabad

Residential Project For
Pal Group "Pal Greens"
Area : 6 Lakh Sq.ft. (Approx) ◀
at
Faridabad



Some of Our Credentials



Residential Project For
Godwin Group
“Godwin Golden Heights”
Area : 6 Lakh Sq. ft. (Approx)
at
Meerut



Residential Project For
Shipra Group
“Mass Housing
Dwelling Units”
Area : 11 Lakh Sq.ft. (Approx)
at
Indirapuram, Ghaziabad



Institutional Project For
NTPC
“Administrative Building”
Area : 2.50 Lakh Sq.ft. (Approx)
(1000 Nos. Capacity Auditorium)
at
Dadri, Ghaziabad

Institutional Project For
“JKG School”
Area : 2 Lakh Sq.ft. (Approx)
at
Ghaziabad



Institutional Project for
Guru Nanak Goundation
Area : 2.15 Lakh Sq.ft. (Approx)
at
Jalandhar

Institutional Project For
L.B.S.V
“Administrative Block Building”
Area : 2 Lakh Sq.ft. (Approx)
at
Katwaria Sarai, Delhi





Institutional Project For
Lovely Group
"Lovely Professional University"
Area : 7 Lakh Sq.ft. (Approx)
at
Hoshiyarpur, Jalandhar



Institutional Project For
"Prakash Institute"
Area : 3 Lakh Sq.ft. (Approx)
at
Greater Noida



Institutional Project For
"Millenium School"
Area : 2.25 Lakh Sq.ft. (Approx)
at
Noida

Institutional Project For
"St. Thomas School"
Area : 3 Lakh Sq.ft. (Approx) ◀
at
Ghaziabad



Institutional Project For
IHM Group
"Institutional Building"
Area : 4.50 Lakh Sq.ft. (Approx)
at
Meerut

Institutional Project For
A.W.H.O
"Arun Vihar Institutional
Club Building" ◀
at
Noida





Commercial Project For
Godwin Group "Godwin Hotel"
Area : 2.50 Lakh Sq.ft. (Approx)
at
Haridwar



Commercial Project For
Twinkle Buildcon
"Pearls Plaza"
Area : 6.30 Lakh Sq.ft. (Approx)
at
Noida

Commercial Project For
"Hotel Basant"
Area : 1.50 Lakh Sq.ft. (Approx) ◀
at
Haridwar



Commercial Project For
"Sumitra Hospital"
Area : 50 Thousand Sq.ft. (Approx) ▶
at
Noida



Commercial Project For
Godwin Group "Godwin Hotel"
Area : 2.50 Lakh Sq.ft. (Approx) ◀
at
Meerut





Commerical Project For
"Krishna Boysen Exhaust Ltd."
▶ Area : 1.5 Lakh Sq.ft. (Approx)
at
Greater Noida



Commercial Project For
"Prakash Hospital"
Area : 1 Lakh Sq.ft. (Approx) ◀
at
Noida



Commercial Project For
Shipra Group
"Multi-Plex (Shipra Mall)"
▶ Area : 3.50 Lakh Sq.ft. (Approx)
at
Ghaziabad

Commercial Project For
TDI Group "TDI MALL"
Area : 5.50 Lakh Sq.ft. (Approx) ◀
at
Rajouri Garden, New Delhi



Commercial Project For
Shanti Kunj "Ware House"
Area : 2.50 Lakh Sq.ft. (Approx) ◀
at
Haridwar

Commercial Project For
Deep Ganga Group
"D.G Mall" ◀
Area : 3 Lakh Sq.ft. (Approx)
at
Haridwar





Residential Project For
Op Chanin Group "Anthela"
Area : 7.60 Lakhs Sq ft
At
Agra



Residential Project For
Aradhyam Group "Golf Homes"
Area : 6.25 Lakh Sq.ft. (Approx)
at
Noida Extention



Residential project for
Surya Infra Developers "Surya Elegance"
5 Lak sqft area
At
Gomti Nagar Extention Lucknow (U.P.)



"Luxury Villas"
"Godrej Golf Links"
For AR Landcraft Group LLP
(Godrej Group)
Covered Area- 3.07 lacs Sqft. (approx)
At **Greater Noida, U.P.**



"LULU MALL"
For KEF INFRASTRUCTURE
Covered Area- 19 laks Sqft. (approx)
At Lucknow, U.P

Mixed used Multistoried Project
"Agora City Center"
For MANAV INFRASTRUCTURE (Shree Balaji Group)
Covered Area- 17.5 laks Sqft. (approx)
At Vadodara, Gujrat

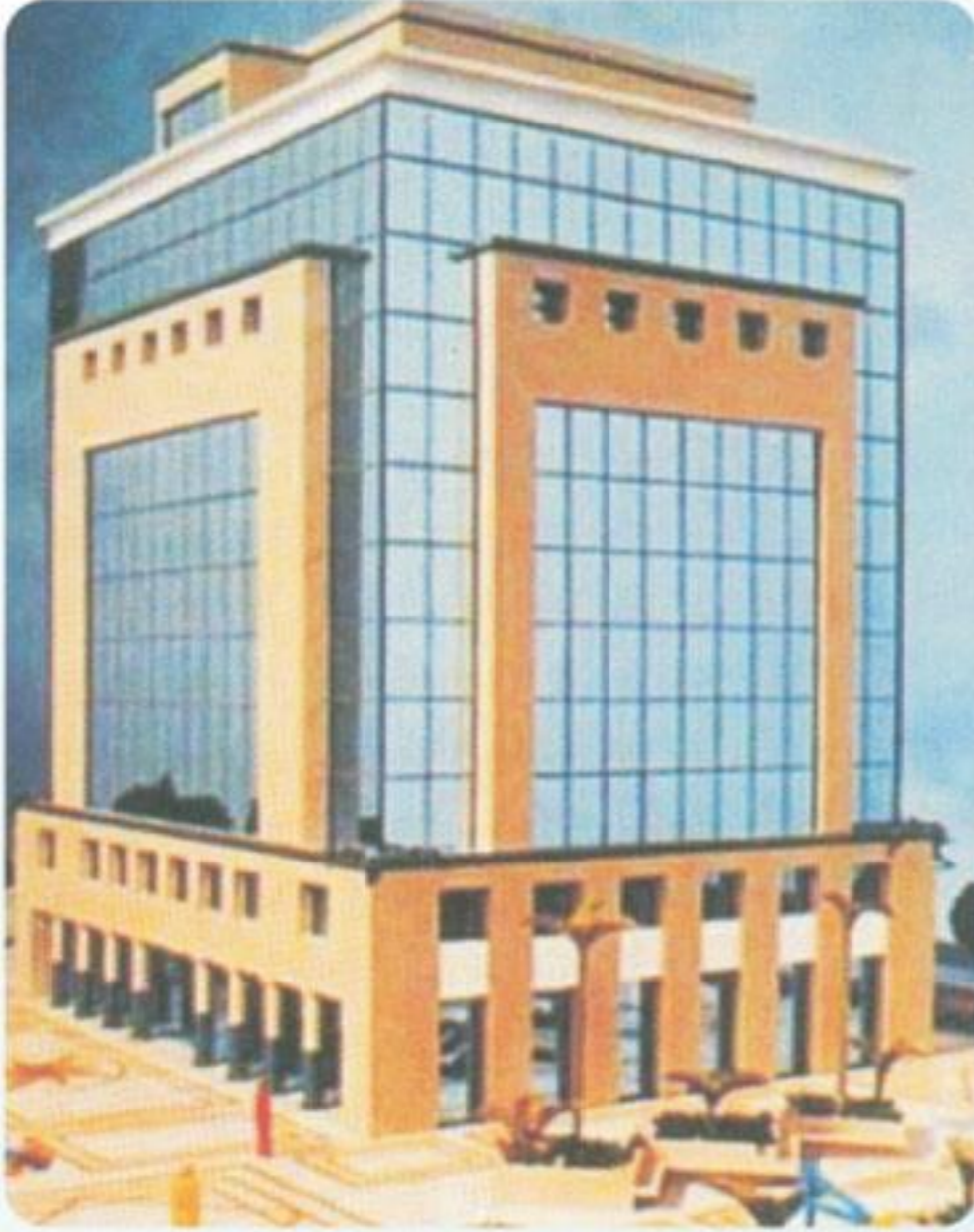




**Institutional Project
"Amrita Institute of
Medical Science"**
For MATA AMRITANANDAMAYI MATH
Covered Area- 4.97 laks Sqft. (approx)
At Faridabad, Haryana

**Residential Multistoried
Group Housing
"Florida"**
For OP Chain Group
Covered Area- 6.99 laks Sqft. (approx)
At Faridabad, Haryana





Commercial Project For
"Kaisons Tower"
Area : 1.30 Lakh Sq.ft. (Approx)
at
Greater Noida

Commercial Project For
Niti Shree Group
"Shopping cum Office Complex
Tradex Tower-II" (3 Tower)
Area : 3 Lakh Sq.ft. (Approx)
at
Greater Noida



Commercial Project For
Alcatel Group
"Alcatel Network System
Industrial Building"
Area : 3 Lakh Sq.ft. (Approx)
at
Gurgaon



**Savy
Ville de**
"freedom redefined"
Rajnagar Extn., NH-58, Ghaziabad



Residential Group Housing Project For
Ascent Group
"Savy Ville de"
Area : 11.30 Lakh Sq.ft. (Approx)
at
Rajnagar Extn., Ghaziabad



**Ascent
Arcade**

Shaurya Puram, NH-24



Commercial Project For
Ascent Group
"Ascent Arcade"
Area : 1.20 Lakh Sq.ft. (Approx)
at
NH-24, Ghaziabad



Residential Group Housing Project For
Ascent Group
"Savy Homz"
Area : 6.50 Lakh Sq.ft. (Approx)
at
Rajnagar Extn., Ghaziabad



Residential Project For
Hansmukhi & Ascent Group
"Misty Meadows"
Area : 3.70 Lakh Sq.ft. (Approx)
at
Kumar Hatti,
Shimla



Residential Project For
Hansmukhi & Ascent Group
"Race Course Valley"
Area : 4.20 Lakh Sq.ft. (Approx)
at
Dehradun

Residential Project For
Ascent Group
"Royal Tower"
Area : 1.1 Lakh Sq.ft. (Approx)
at
Jalandhar, Punjab

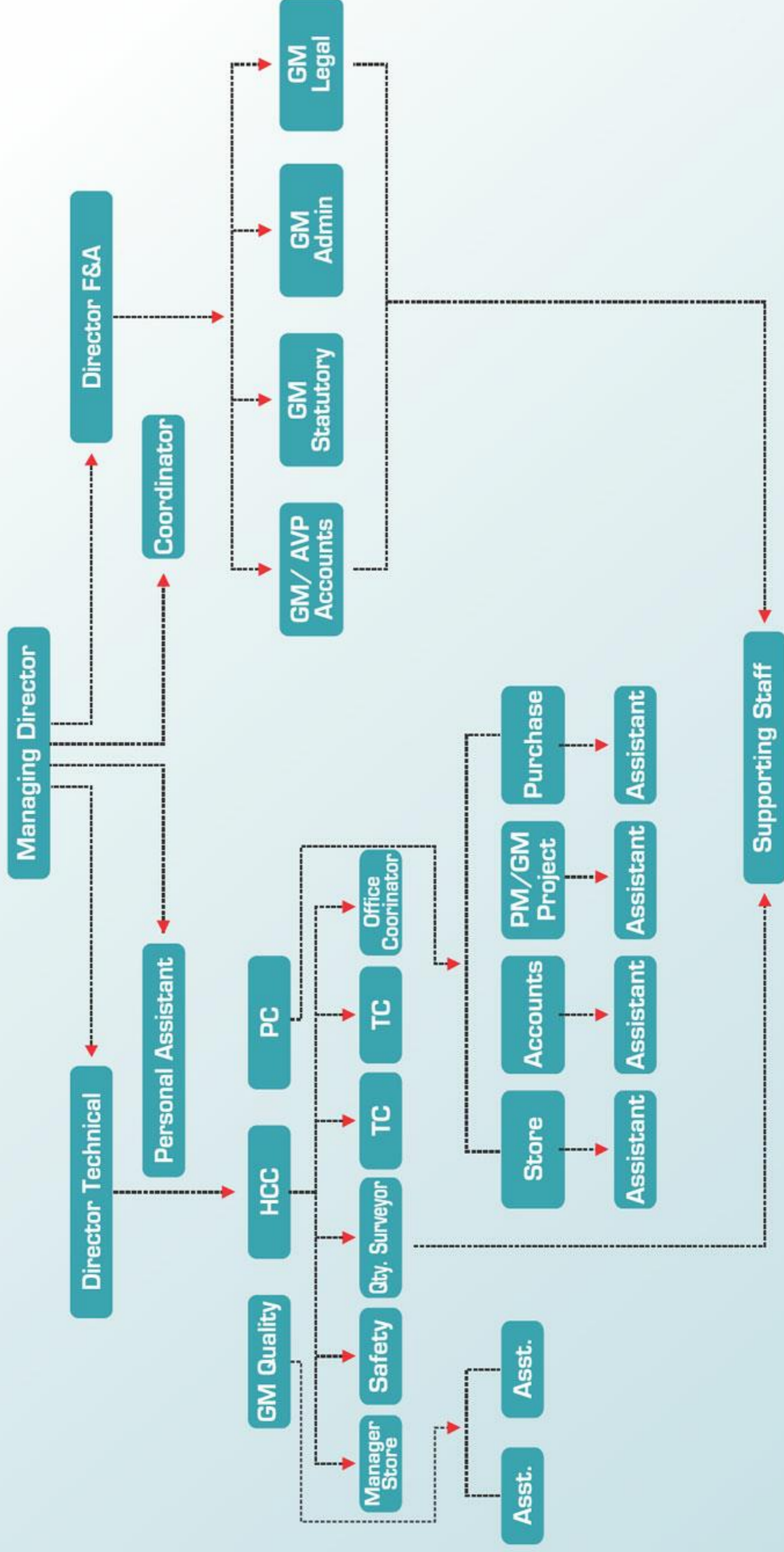


Residential Project For
Horizon & Ascent Group
"Kings Garden"
Area : 2.70 Lakh Sq.ft. (Approx)
at
Jalandhar

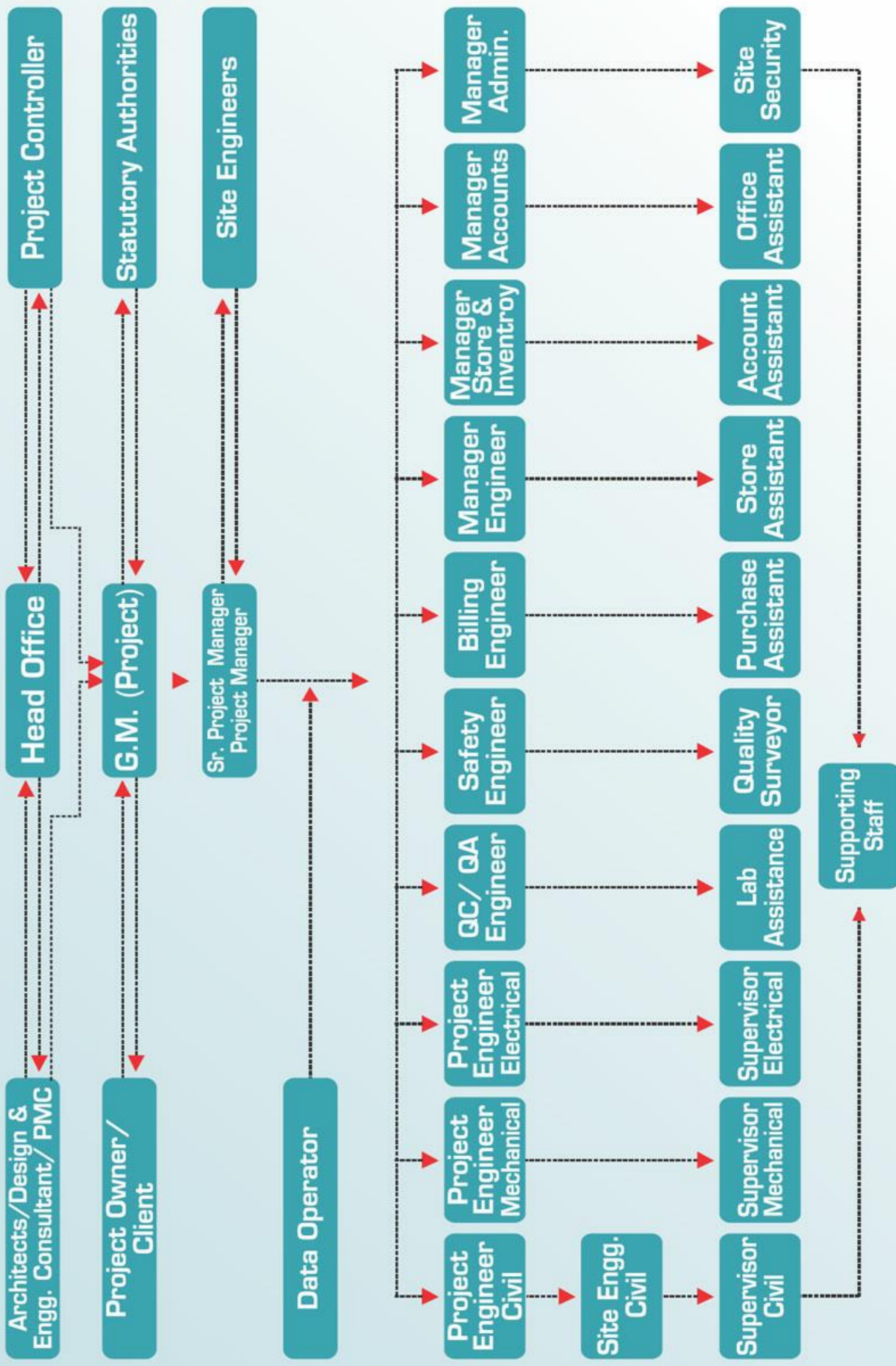
Residential Project For
Hansmukhi & Ascent Group
"Garden Estate"
Area : 8.70 Lakh Sq.ft. (Approx)
at
Dehradun



Organization Chart



Site Organization Chart





PLANTS & EQUIPMENT



The company has acquired the following equipments for maintaining various type of project :-

SHUTTERING & SCAFFOLDING EQUIPMENTS

Steel Plates	1130000 Sqft.
Steel Props Telescopic Adjustable Jack Type	30000 Nos.
Box type Steel Span Telescopic Adjustable	6000 Nos.
Ms Pipes with U head Jack	20000 Nos.
Ms Standard 2.0Mtr to 3 Mtr	50000 Nos.
Ms Ledgers .09 Mtr to 2.0Mtr	110000 Nos.
Ms Channels	60000 Rft.
Acrow Shuttering System	62000 Sqft.

FIELD LABORATORY EQUIPMENTS

100 Tone Compression Testing Machine	20 Nos
200 tone Compression Testing Machine	40 Nos
Shakers Electric Type	12 Nos
Slump Cones	24 Nos
Sieves as per IS 460 - 1962	30 Sets
Weigh Balance	40 Nos
Gas Burners	32 Nos
Cube Moulds	400 Nos
Core Cutter Machine	30 Nos
Rebound Hammer	8 Nos
Soil Testing Equipments (Density)	8 Nos

PLANT & MACHINERIES

Batching Plants	8 Nos
Mini Batching Plants (Gamzon)	4 Nos
Mixers (Mechanical Type)	24 Nos
Builder Hoists	11Nos
Weigh Batchers	2 Nos
Concrete Pumps	9 Nos
Tower Cranes (+ 75Mtr height)	8 Nos
Tower Cranes (+ 100Mtr height)	10 Nos
Mobile Tower Cranes	4 Nos

STONE & MARBLE CUTTING EQUIPMENTS

Table type Dimond Cutter	10 Nos
Stone Cutters Machine	10 Nos
Table Grinders	10 Nos
Floor Polishing Machine	30 Nos

TRANSPORT EQUIPMENT

Tranctor Trolly	8 Nos
Water Tanker	6 Nos
Tata Tempo	4 Nos

DEWATERING EQUIPMENTS

Submercible Pumps	75 Nos
Electric Monoblocks Pumps	80 Nos
Diesel Pump	30 Nos

EARTH MOVING

Escorts JCB Excavator	4 Nos
Tractor Loder	8 Nos

SURVEY EQUIPMENTS

Leveling Machine	16 Nos
Auto Lavel Machine	4 Nos
Thedolite	8 Nos

WORKSHOP EQUIPMENTS

Lathe (Medium Size)	6 Nos
Welding Plants	28 Nos
Power Press (IOT)	3 Nos
Planners	4 Nos
Rebators	4 Nos
Grinders	15 Nos
Drillers	15 Nos
Gas Cutting Equipments	10 Nos

POWER GENERATORS

Power Generators 600KVA	3 Nos
Power Generators 250KVA	4 Nos
Power Generators 125KVA	10 Nos
Power Generators 62.5KVA	25 Nos
Power Generators 32KVA	10 Nos
Power Generators 22KVA	8 Nos

Note : Shuttering material and Machinery shall be deployed at site as per requirement. If required, the shuttering material and other equipments may be purchased or hired in the interest of work.

Name of Project & Clients

M/s. Jaiprakash Infrastructure Ltd.

Construction of "Aman Towers" at Sector-151, Noida (without the cost of Cement & Steel) including Finishing & Electrical work

IITL-NIMBUS THE HYDE PARK, NOIDA

Construction of "The Hyde Park" Group Housing at Sector-78, Noida (without the cost of Cement & Steel).

M/s. Solitaire Infrahome Pvt. Ltd.

Construction of Residential Apartments at VVIP Homes at Greater Noida (West) Gautam Budh Nagar.

M/s. Vibhor Vaibhav Infrahome Pvt. Ltd.

Construction of Residential Apartments at VVIP Addresses at Noor Nagar, Raj Nagar Extn., NH-58, Ghaziabad

M/s Ascent Buildtech Pvt. Ltd.

Construction of "Multistoried Residential" Group Housing At "Savy Homes" For M/s Ascent Buildtech Pvt. Ltd. At Ghaziabad

M/s Ascent Buildtech Pvt. Ltd.

Construction of "Multistoried Residential" Group Housing Tower B & C at "Savy Ville De" at Ghaziabad

Guru Nanak Foundation

Construction of Senior Secondary School for "Guru Nanak Foundation" at Urban Estate, Phase-I, Jalandhar.

M/s. Horizon Building Solutions Pvt. Ltd

Construction of Residential Apartments "Royal Tower" at Jalandhar

M/s Lovely Professional University, Jalandhar, Punjab

Construction of "Construction Of Institutional Building at Hoshiyarpur for Lovely Professional University

M/s. Pan Realtors Pvt. Ltd.

Construction of Residential project at "PAN Oasis Project", Sector-70, Noida

M/s. Royal Hometown Planners Pvt. Ltd.

Construction of Residential project "Beetel Lap" at Jaypee Sports City, YEIDA, U.P

M/s. Anthem Infrastructure Pvt. Ltd.

Construction of Residential Apartments at Anthem French Apartment at GREATER NOIDA

M/s R.G. Infrabuild Pvt. Ltd.

Construction of "Multistoried" Residential Apartments at "RG - LUXURY HOMES" at Greater Noida

M/s. Nitishree

Construction of Shopping Complex "Ascent Arcade" at NH-24.

M/s. Supertech Limited

Construction of "Apex Towers" at Sector-93A, Noida

Kunigona Welfare Housing Organization

Architects/ Consultants

M/s. Jasbir Sahni

Optimum Design Pvt. Ltd.

M/s. Gian P Mathur & Associates Pvt. Ltd.

M/s. Anuj Aggarwal

M/s Space Designers International

M/s Space Designers International

N + U DESIGN STUDIO

Rajindra Associates

Mr. Atul Singhla

M/s. Deepak Mehta & Associates

Modarch Architects Interior Designer & Pla

M/s. Deepak Mehta & Associates

M/s. Design Forum International

M/s Space Designers International

Modarch Architects Interior Designer & Pla

Name of Project & Clients

Krishna Boysen Exhaust Ltd.

Factory Utility Building and Site Development at Village- Suthiyana, Surajpur, G. Noida

Daewoo Motors (I) Ltd.

Assembly Shop of Car Plot, Road Work, External Development, Drainage & Ext. of Delivery Yard at Surajpur, G. Noida

Punj Lloyed Ltd.

Callariflocculator, Pump House & Alarm Store at 91 MLD Water Treatment Plant, Bawana.

TRIVENI Infrastructure Development Co. Ltd.

Multistoried Residential Group Housing "Triveni Galaxy" at Sector-78, Faridabad.

Alcatel Network System (I) Ltd.

Extension of AMNS Plant Building.

Resandik Engg. Industries (I) Ltd.

Factory Building at Sohna Road, Gurgaon.

Shipra Estate Ltd.

Mass Residential "Classical & Deluxe" Flats at Shipra Riviera, Indirapuram, Gzb.

PAL Infrastructure & Developers (P) Ltd.

"PAL Greens" Multistoried Residential Group House at Sector-78, Faridabad

Shipra Estate Ltd.

Multi- Storey (Tower) Commercial cum Residential Building at Shipra Riviera (11 Storey)

Housing Board Haryana, Faridabad.

Residential Complex 684 Flats (Area 20000 Sq. ft) at Sector-3, Faridabad

Prakash Hospital/ Sumitra Hospital

100 Bedded Hospital Building at Noida

Educomp Infrastructure Pvt. Ltd.

"Millenium School" at Sector-135, Noida.

Shipra Estate Ltd.

Multi-Plex Building at Indirapuram, Ghaziabad.

ARMY WELFARE HOUSING ORGANIZATION

Club Building at Sector-29, Noida.

St. Thomas Orthodox Church Society

High School Building at Indirapuram Ghaziabad (U.P)

Dehradun Institute of Technology

Boys Hostel Building at Dehradun (U.C.)

Sunrise Associates

Commercial Building (Basement + 8 Storey) at Plot No. A-4, Sector- Alpha, Greater Noida.

Indura Finlease Pvt. Ltd.

Commercial Building (Basement + 10 Storey) at Plot No. B4, Sector- Alpha, Greater Noida.

Nitishree Builders Pvt. Ltd.

Commercial Building (Basement + 10 Storey) at Plot No. B2, Sector- Alpha, Greater Noida.

Architects/ Consultants

Abhijit Ray & Associates

New Delhi

C.P. Kukreja & Associates

New Delhi

TATA Consultancy

New Delhi.

Consulting Engg. Services (I) Ltd.

New Delhi.

Consulting Engg. Services (I) Ltd.

New Delhi.

Kapoor & Associates Consultant

New Delhi.

Jaiswal & Associates

New Delhi.

Design Forum International

New Delhi.

Jaiswal & Associates

New Delhi.

Client

Vastunidhi

Noida.

Vijay Gupta Architect

Nehru Place

Jaiswal & Associates

New Delhi.

Sehgal Jatia & Associates

New Delhi.

Global Dimensions

Nehru Place, New Delhi

Gian P. Mathur & Associates

New Delhi.

Vastunidhi

Noida.

Vastunidhi

Noida.

Vastunidhi

Noida.

Name of Project & Clients

Om Golf Course Square

Commercial Building (Basement + 10 Storey) at Plot No. B5, Sector- Alpha, Greater Noida.

Eldeco Infrastructure & Properties Ltd.

"Residential Expandable Villas" at Sohna Road, Gurgaon

Omaxe Constructions Ltd.

"NRI City" Multistoried Residential Group Housing 11 Stories at Greater Noida

Shipra Estate Ltd.

"Sun Tower" Residential Multistoried Building (G+11 Storey) at Shipra Suncity, Indirapuram, Gzb.

Surya Merchants Ltd. (Supertech Group)

Multi-Storey Shopping Cum Residential Complex 13 Storied at Kaushambi, Ghaziabad

Pushpanjli Promotors Ltd. (TDI)

"TDI Mall" at Rajauri Garden, New Delhi

Twinkle Buildcon Pvt. Ltd.

"Pearis Plaza Commercial Vomplex" at Sector-18, Noida

NTPC Dadri

"Auditorium Building" at NCPS, NTPC, Dadrim Gauttom Hudh Nagar

JKG Education Society

JKG School Building at Indirapuram, Gzb.

Institute of Hotel Management Meerut.

"IHM Institutional & Hostel Building" at Dauralla, Meerut

Jaipuria Infrastructure & Developers Pvt. Ltd.

"Jaipuria Sunrise Greens" Multistoried Residential Flats (Double Basement+16 Storied) at Indirapuram, Gzb.

Shipra Krishna & Shipra Estate Ltd.

"Shipra Krishna" Multistoried Residential Flats at Shipra Suncity Phase-IV, Indirapuram, Gzb.

Oasis Realtors Private Ltd.

"Emerald Heights-I" Multistoried Residential Flats at Ramprastha Green, Vaishali, Gzb.

Hansmukhi Projects Pvt. Ltd.

"RACE COURSE VALLEY" Multistoried Residential Flats at Race Course Road, Dehradun

Godwin Construction Pvt. Ltd.

"Golden Heights" Residential Flats at Meerut

Hansmukhi Projects Pvt. Ltd.

"Kind Garden" Multistoried Residential cum Commercial Complex at Jalandhar

Aruna Associates

"Misty Meadows" Studio Apartments & Villas at Kumat Hatti, Himachal Pradesh

Berry Developers & Infrastructure Pvt. Ltd.

"BDI Sunshine City" Housing Complex at Bhiwani

Shri Lal Bahadur Shashtri Rashtriya Sanskrit Vidyapeetha

"Administration Building of Vidyapeetha" at Katwaria Sarai, N.D.

Architects/ Consultants

Vsatunidhi

Noida

Space Combine

New Delhi

Shaha & Associates

New Delhi

Jaiswal & Associates

New Delhi.

Space Design

Vaishali, Ghaziabad

Architect Bureau

Vasant Vihar, New Delhi.

Adlakha & Associates

New Delhi.

Self

Anil Jain Associates

New Delhi.

Anil Jain Associates

New Delhi.

Space Combine

New Delhi

Jaiswal & Associates

New Delhi.

Nivedita Uday Pandey & Associates

New Delhi

Panjwani & Associates

Dehradun

Pradeep Ahuja Architect

New Delhi.

Space Designers

Vaishali, Ghaziabad

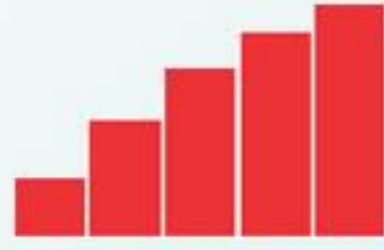
Jaiswal & Associates

New Delhi.

Jaiswal & Associates

New Delhi.

Self



ASCENT GROUP OF COMPANIES:-

Ascent Constructions Pvt. Ltd.

Ascent Buildtech Pvt. Ltd.

Ascent Steel & Fabrications Pvt. Ltd.

Ascent Infotech

Ascent Enterprises

Ascent Developwell Pvt. Ltd.

Horizon Solutions Pvt. Ltd.

FOUNDERS OF ASCENT



Engaged in construction of:



ALL CIVIL WORKS PERTAINING TO:

Industrial Building

Residential Building

Hospitals

Multiplexes and Shopping Malls

Institutional Building

ALL SERVICES SUCH AS:

Electrical Work

Plumbing Work

Fire Fighting Work

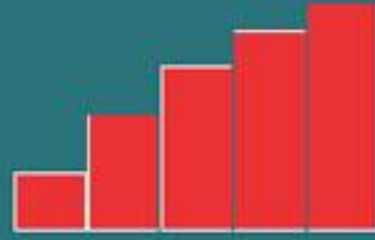
Ext. Development Work

Road, Drainage and Sewerage Work

OTHERS SUCH AS:

Mass Earth work with heavy machines

Heavy Fabrication Works



ASCENT CONSTRUCTIONS PVT. LTD.

Head Office:

"ASCENT HOUSE" D-43, Sector-6, Noida-201301

Tel.: (91-120) 3258912, 3258913, Fax: 95120-2423998, 2424801

Mob.: +91-9310293722, 9310293718

Regd. Office:

39 G, Pocket-1, Mayur Vihar, Phase-III, Delhi-110096

Tel: 011-22623904

Web.: www.ascentlimited.com • Email: info@ascentlimited.com